



Crosslink Technology Inc.,
established in 1981,
located in Toronto, Ontario, Canada,
operates two separate and distinct divisions
serving customers with a variety of
Epoxy and Polyurethane applications
and custom cast electrical components.

Both divisions are certified to
ISO 9001:2008 and 14001:2004
quality standards.

Cast Epoxy Bushings & Insulators



Crosslink Technology Inc.
Epoxyes, Urethanes • Custom Cast Parts

2.00"

Advantages to Crosslink Bushings:

- We offer a standard line of air to air and air to oil bushings for Low, Medium and High voltage applications
- In addition to standard items, we offer custom cast components
- Our engineering department can consult on new designs, redesigns, and reverse engineering projects
- We can utilise epoxy tooling for smaller prototype or repair quantities
- We offer machining services for unique mold and conductor requirements
- Our Epoxy Bushings are manufactured to the highest quality standards and have 35 years of proven field performance
- Our transformer bushings are available for both indoor and outdoor service
- Our resins have been formulated to meet specific mechanical and electrical challenges
- Epoxy is more durable than porcelain and our parts do not require assembly
- There is no chance of leakage due to improper assembly
- Lower chance for destructive partial discharge



Advantages to Crosslink Insulators:

- Crosslink Technology offers a standard line of epoxy cast standoff insulators ranging from a voltage class of 600v to 34.5kv
- All components are available with various standard threaded insert sizes including metric threads
- Our resins have been formulated to meet specific mechanical and electrical challenges
- Our composite insulators, due to their impact resistance, are an improvement over porcelain insulators
- We offer insulators for both indoor and outdoor service



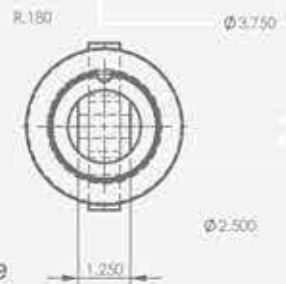
Mechanical Design Automation Software including 3-D Parametric Solid Modeling, providing the customer with immediate product design and analysis information.

3D
modeling

Research and Development services for development of new materials and technologies.



Test facilities for routine and prototype testing.



Capabilities

- In addition to our standard offering, our engineering design department will work with our customers to create custom cast transformer bushings and standoff insulators, specific to our customer's needs
- We offer quick turn-around of tooling and prototypes, and can assist with machining services
- We have the experience and capacity to take on bulk run projects with global partners and can assist with our customers' inventory management requirements
- We thrive on challenging requirements and relish partnering in the design-prototype-first run process



Epoxy Transformer Bushings

Many of the items listed below are standard electrical supplies and are available from stock or with a short lead time.

Part number	Voltage class	Current	Tank Opening
85-105	1.2kv	600A	2.25
85-113	1.2kv	2800A	4.85 X 2.26
85-204	1.2kv	300A	2.25
85-205	1.2kv	4500A	4.125
85-338	1.2kv	900A	2.56
85-409	1.2kv	2083	3.06
85-416	1.2kv	2500A	2.625
90-231	1.2kv	4900A	3.06
85-339	2.5kv	3150A	3.06
85-410	2.5kv	2200A	3.06
91-102	5kv	800A	5.50
90-114	15kv	600A	5.50
90-115	25kv	1200A	5.50
85-168	27.5kv	600A	2.55
90-301	34.5kv	800A	2.55
90-345	15kv	400A	2.55

Stand-off Insulators

Our Insulators range from 600v to 34.5kv. Below are some of our parts

Part number	Voltage class	Height	Inserts	Creep distance
90-105	600v	1 3/8	1/2" or 3/8"	13/8
90-123	5kv	2.50	1/2"	2.50
90-171	5kv	3.50	3/8"	4.00
90-191	5kv	3.50	1/2"	4.00
91-107	7.5kv	4.50	1/2" or 3/8"	5.25
90-106	15kv	6.00	3/8"	7.50
90-107	15kv	6.00	1/2"	7.50
90-252	20kv	7.2	M16 or M10	8.50
90-108	25kv	11.00	1/2"	11.50
90-109	25kv	11.00	3/8"	12.25
90-184	25kv	8.25	3/8"	12.25
90-259	34.5kv	15.00	1/2"	22.00
90-370	46kv	22.00	1/2" or 3/8"	40.00

- We offer a standard line up of industry proven bushings and insulators
- We offer design, tooling, and quick turn around on production of prototype parts
- We offer reverse engineering for the replacement of original porcelain parts
- We offer components for both indoor and outdoor environments utilizing market leading cycloaliphatic epoxy systems
- Our Quality Control department follows detailed procedures to ensure Crosslink material and finished product meet customer specifications

Our goal is simple

To meet our customer requirements by providing on-time delivery, continuous improvement and, above all else, **quality**.



Follow us on:



6430 Vipond Drive,
Mississauga, ON L5T 1W8 Canada
Phone: (905) 673.0510
Fax: (905) 673.0519
Toll free North America: 1.800.563.3769

www.crosslinktech.com



Crosslink Technology Inc.
Epoxies, Urethanes • Custom Cast Parts